

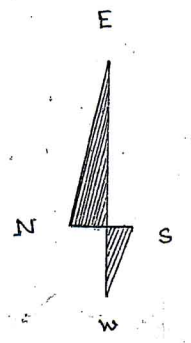
"CAMPUS No-1" OF DEOMORNOI B. ED. COLLEGE (AREA = 2 BIGHA)

SITE PLAN OF DEOMORNOI B. ED. COLLEGE

DIST. DARRANG (ASSAM).

NOT TO SCALE

"ALL DIMENSIONS ARE IN METRE"



OFFICE CUM COLLEGE BLDG.
OF DEOMORNOI B. ED. COLLEGE
CAMPUS No-1 / AREA = 2 BIGHA.
BUILDING AREA = 1501.18 M²

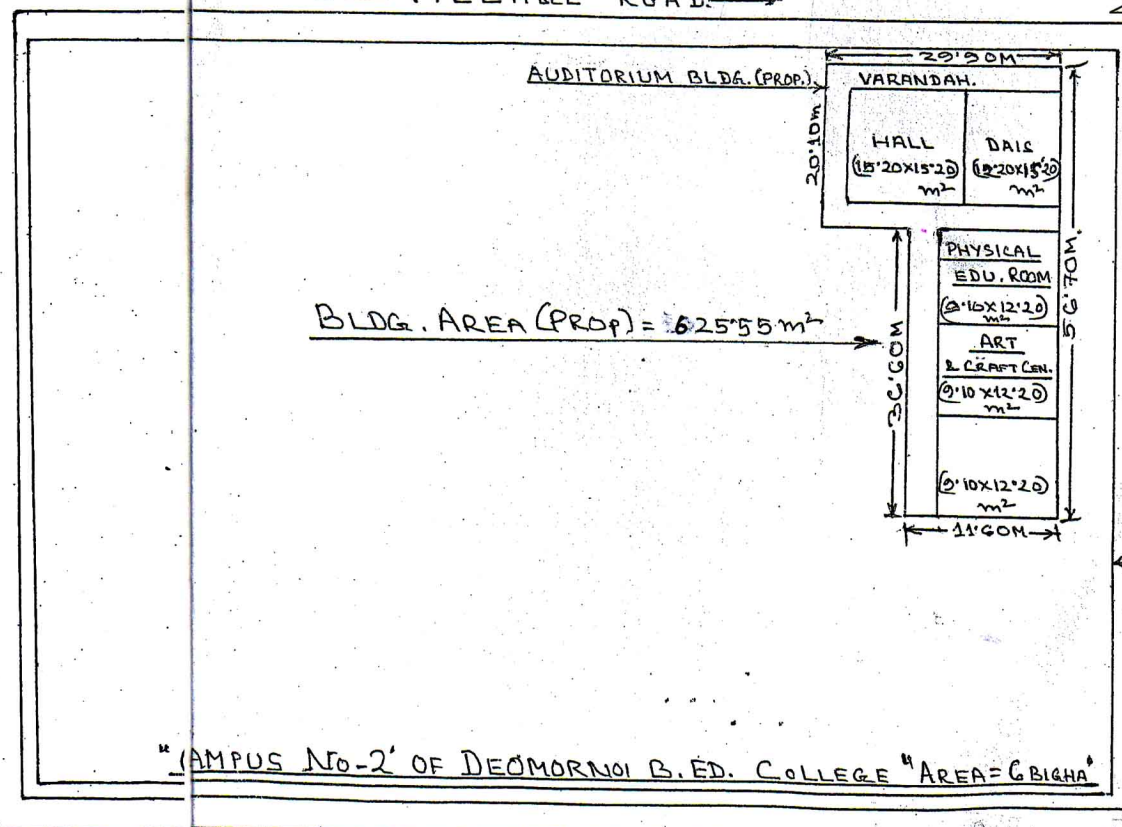
← COLLEGE ROAD →

{ CAMPUS OF DEOMORNOI 30 BEDED P.H.C. }

← VILLAGE ROAD →

- 1, MAIN BLDG. P/A = 1,501.18 M²
 - 2, AUDITORIUM BLDG P/A = 625.55 M²
- G.T. = 2,126.73 M²

DEOMORNOI STADIUM.



[Signature]
 Executive Engineer
 PWD Tezpur Building Division
 Tezpur

[Signature]
 DEOMORNOI C. P.

[Signature]
 Aest. Executive Engineer P.W.D.
 Mangaldai Bldg. Sub-Division

[Signature]
 11/01/15
 Junior Engineer
 Mangaldai Bldg. Sub-Division